

***Element 22.00***

**Monaghan-Berman**



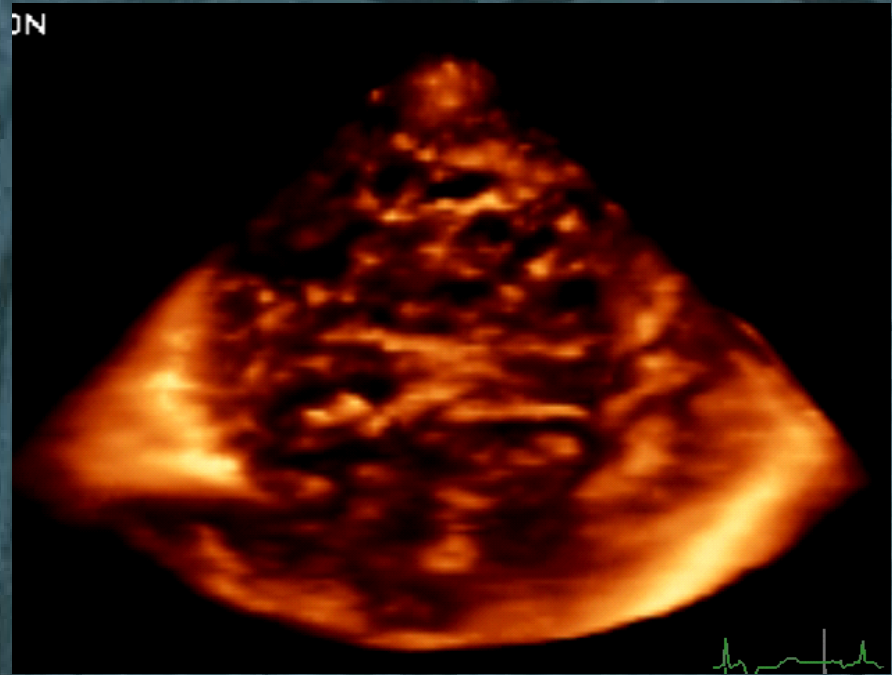
# Patient

- 18 y/o male
- Congenital Heart Disease
- LV non-compaction

# LV Non-Compaction



**Normal Fetal Heart  
at 6 weeks**



**Left Ventricular Non-Compaction**

***Varnava et. al. Heart 2001;86;599-600***

